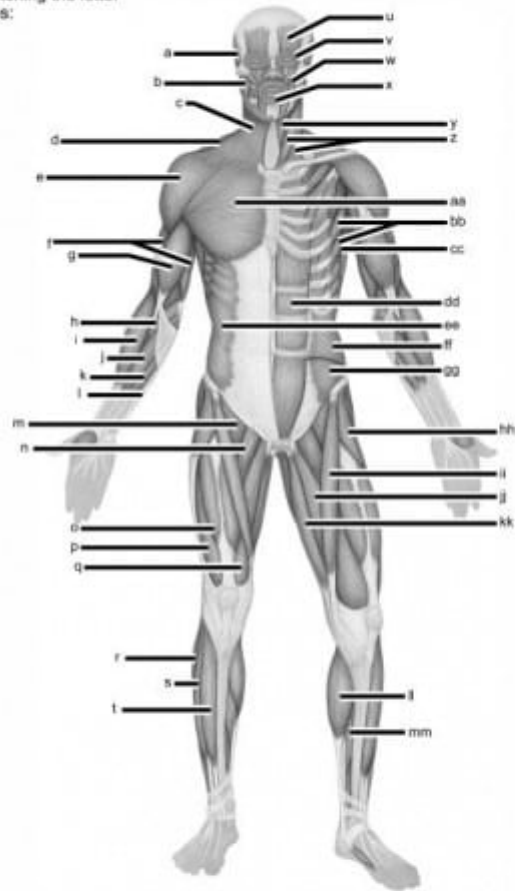


General Review: Muscle Recognition

11. Identify the lettered muscles in the diagram of the human anterior superficial musculature by matching the letter with one of the following muscle names:

- h 1. adductor longus
- g 2. biceps brachii
- j 3. brachioradialis
- e 4. deltoid
- h 5. extensor digitorum longus
- ee 6. external oblique
- r 7. fibularis longus
- j 8. flexor carpi radialis
- l 9. flexor carpi ulnaris
- u 10. frontalis
- h 11. gastrocnemius
- kk 12. gracilis
- m 13. iliopsoas
- ff 14. internal oblique
- cc 15. latissimus dorsi
- b 16. masseter
- v 17. orbicularis oculi
- x 18. orbicularis oris
- k 19. palmaris longus
- n 20. pectineus
- aa 21. pectoralis major
- c 22. platysma
- h 23. pronator teres
- dd 24. rectus abdominis
- o 25. rectus femoris
- h 26. sartorius
- bb 27. serratus anterior
- mm 28. soleus
- z 29. sternocleidomastoid



- y 30. sternohyoid
- a 31. temporalis
- hh 32. tensor fasciae latae
- f 33. tibialis anterior
- gg 34. transversus abdominis
- d 35. trapezius
- f 36. triceps brachii
- p 37. vastus lateralis
- q 38. vastus medialis
- w 39. zygomaticus