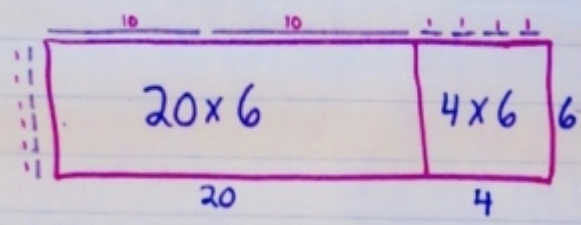


# Multiplication Strategies $24 \times 6$

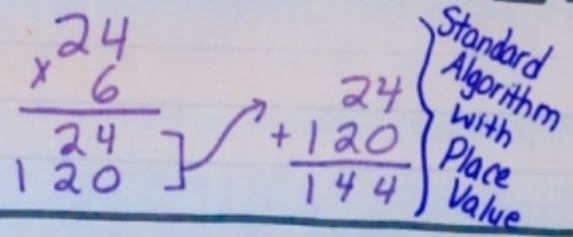
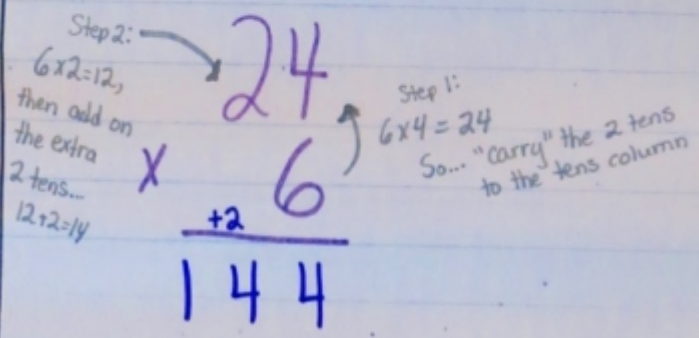
## Area Model:



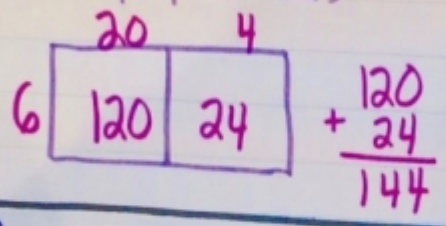
\* You can use grid paper to draw an exact area model, or just use shorthand to draw a rough model!

$$120 + 24 = 144$$

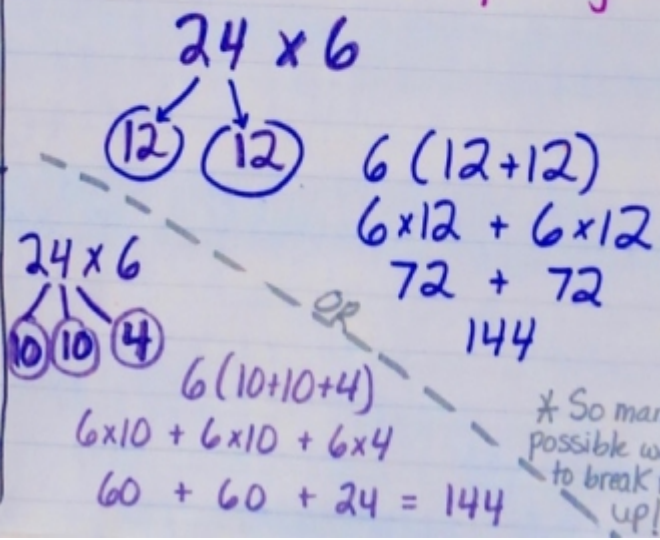
## Standard Algorithm:



## Box/Grid Method: (not proportional)



## Partial Products using the Distributive Property:



## Compensation Method:

$24 + 1 = 25 \rightarrow 25 \times 6 = 150$   
 $150 - \text{one } 6 = 144$   
 Uses a nearby "easy" number.